



[www.ecarte.info](http://www.ecarte.info)



THE CENTRAL SCHOOL OF  
SPEECH AND DRAMA  
UNIVERSITY OF LONDON

## JOINING THE CONFERENCE

### Submission of abstracts

If you wish to submit an abstract for consideration by the Conference Scientific Committee, you must complete an abstract form on-line via the conference website at [www.ecarte.info](http://www.ecarte.info)

**Deadline for receipt of completed abstracts: Monday, 30th March 2009!**

### Booking your place

To book a conference place, you can register on-line at [www.ecarte.info](http://www.ecarte.info)

### Dates and Venue

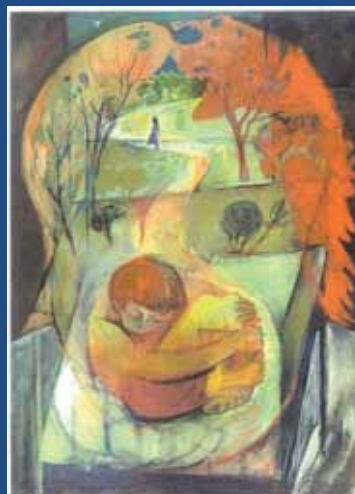
Conference registration will commence at 14.00 hours on Wednesday, 16<sup>th</sup> September, and the official welcome will take place that evening.

### Accommodation and Travel

Your accommodation and travel arrangements to London are your own responsibility.

### For more information please contact the Conference Office

c/o University of Applied Sciences  
Am Wiestebruch 31  
28870 Ottersberg, GERMANY  
[conference2009@ecarte.info](mailto:conference2009@ecarte.info)



**10<sup>th</sup>  
EUROPEAN  
ARTS  
THERAPIES  
CONFERENCE  
LONDON, UK**

**16<sup>TH</sup> – 19<sup>TH</sup> SEPTEMBER 2009**

**THE SPACE BETWEEN  
the potential for change**

## **ECArTE**

European Consortium  
for Arts Therapies Education  
Hon.President: Line Kossolapov

---

### **CALL FOR PAPERS**

---

The European Consortium for Arts Therapies Education is a non profit-making organisation. It is a consortium of universities, which was founded in 1991 and currently comprises 33 member institutions from 14 European countries.

Its primary purpose is to represent and encourage the development of nationally validated and professionally recognised standards of education in the arts therapies in Europe (art therapy, dance-movement therapy, dramatherapy and music therapy). A major part of the work of the Consortium is its biennial international conferences, which offer opportunities for professional communication, networking and exchange of ideas. The most recent conference, in Tallinn, Estonia, drew participants from 28 countries from across the world. For further information please see our website [www.ecarte.info](http://www.ecarte.info)

---

### **CONFERENCE DIRECTORS ECArTE Executive Board**

---

**Chair:** Christine Lapoujade  
Université René Descartes, Paris 5, FRANCE  
[christine.lapoujade@parisdescartes.fr](mailto:christine.lapoujade@parisdescartes.fr)

**Vice-Chair:** Sarah Scoble  
University of Worcester, UK  
[s.scoble@worc.ac.uk](mailto:s.scoble@worc.ac.uk)

**Treasurer:** Egbert Hulshof  
Han University of Professional Education, NL  
[egbert.hulshof@han.nl](mailto:egbert.hulshof@han.nl)

**Coordinator:** Albrecht Lampe  
University of Applied Sciences, GERMANY  
[kurator@fh-ottersberg.de](mailto:kurator@fh-ottersberg.de)

---

---

# **ANNIVERSARY CONFERENCE**

---

The year 2009 marks ECArTE's 10<sup>th</sup> International Arts Therapy Conference, and 18 years since the founding of the Consortium.

To celebrate this milestone, the Directors plan to enrich the conference by including an exhibition of artwork and performance in the programme.

We shall be pleased to receive proposals and ideas from you by email up until 30th March 2009.

---

**Please contact us on:  
[conference2009@ecarte.info](mailto:conference2009@ecarte.info)**

---

---

#### **Cover picture**

"The Childhood of the Joker"  
by Chris Hoggett, UK  
from his pictorial journal "The Joker",  
reproduced by kind permission of the artist.

Chris Hoggett will be exhibiting his work  
and speaking at the Conference.

---



European Consortium for Arts Therapies Education

## **THE SPACE BETWEEN the potential for change**

**10th European Arts Therapies Conference**

**16th – 19th September 2009**

---

**Venue:**

**THE CENTRAL SCHOOL  
OF SPEECH & DRAMA**

**EMBASSY THEATRE  
64 ETON AVENUE  
SWISS COTTAGE  
NW3 3HY  
UNITED KINGDOM  
[www.cssd.ac.uk](http://www.cssd.ac.uk)**

Registration for the Conference will commence at 14.00 hours on Wednesday.

There will be an official welcome on Wednesday evening. The Conference will end following a closing celebration on Saturday evening.

---

### **Local Conference Organising Committee**

**Ross Brown** - Dean of Studies,  
Central School of Speech and Drama,  
University of London

**Richard Hougham** - Course Leader,  
MA Drama and Movement Therapy (Sesame),  
Central School of Speech and Drama,  
University of London

**Mo Townsend** - Course Tutor,  
MA Drama and Movement Therapy (Sesame),  
Central School of Speech and Drama, University of  
London

**Diane Waller, OBE** - Prof. of Arts Psychotherapy,  
Goldsmiths College, University of London

# CONFERENCE THEMES

## THE SPACE BETWEEN

### the potential for change

The tenth ECArTE conference jubilee will witness a dramatic shift from our first conference in 1990, when Arts Therapy across Europe was trying to establish itself as a profession, to the situation today with its flourishing and developing approaches and significant advances in education in a number of countries. The conference will attempt to explore specific spaces developed to highlight the processes of the arts therapies within a professional, social and international environment. The "space between" will thus provide an open space for exploring the potential for change in arts therapy.

Arts therapists offer their patients very specific environments, where artistic activities take a central place within the therapist-client relationship. Each arts therapy discipline uses a setting with a therapeutic space defined by sensory approaches (colours, sounds etc.) and movements (graphic or sonorous gestures, dance movements etc.). How do these different spaces in the triangular relationship operate and create the potential for change? How does this special space enable clients to create, develop and inhabit a "space between"? And how might arts processes open up and link these different spaces? How might engagement in an arts therapy space create connection where there is disconnection? And in what ways might different therapeutic approaches influence the arts therapist's processes?

Another point to explore might concern the nature of the arts in its different modes – art, drama, music, dance-movement. How can each discrete discipline facilitate interdisciplinary confluence and exchange? The theme will also encourage investigation into the space between participants of numerous nationalities, where professional and educational situations are governed by differing systems of healthcare and economic and political situations. What, too, is the specific space for the arts therapies amongst other health professions across Europe? The four topic blocks which follow are intended to stimulate ideas for the content of the conference. We look forward to producing a stimulating and intensive programme, in which ideas will be challenged, new questions raised and answers provoked.

## **I. CONCEPTS, DEBATES AND RESEARCH OUTCOMES**

For example:

- Philosophical space between different theoretical approaches
- Differences and similarities between arts disciplines
- Space between psyche and soma
- The potential space
- Truths and fictions
- Artistic language, process imagery, symbolism, metaphor and verbalisation
- Balance between doing and talking

## **II. METHODOLOGICAL DEVELOPMENTS AND THE ASSESSMENT OF PRACTICE**

For example:

- Different spaces in the triangular relationship: arts, therapist and client
- Group dynamics and the individual in the arts therapy session
- Self and other
- From creative narrative to constructed meaning
- The meaning of efficacy: for the client, the therapist and the institutions
- Subjective experience and objective reality
- Qualitative and quantitative research
- Integrated arts therapy initiatives

## **III. DEVELOPMENTS IN EDUCATION**

For example:

- Place of a new discipline within the academic institution
- Art and Science: opposite attracting
- European network for art therapy learning and teaching: What cultural space?
- Continuing professional education
- Co-operation between education institutions and professional associations

## **IV. PROFESSIONAL IDENTITY**

For example:

- Cultural identity, self identity and professional identity in the European space
- Professionalisation and State recognition
- Artist or therapist?
- Arts therapies or arts psychotherapies?
- The professional space for the arts therapist in the health profession
- Education and practice in the arts therapies in Europe: differences, similarities

## **HOW TO BOOK YOUR PLACE AT THE CONFERENCE**

To make your booking, please use the ECArTE website:

**www.ecarte.info**

Click on 'Conference 2009', on the top left of the Homepage. This will take you to the Conference site, where you will find details about the Conference 2009 and how to make your application.

If you need assistance, please email the Conference Office on: **conference2009@ecarte.info**

### **REGISTRATION FEES**

Received before June 1st 2009	400 EUR
Received by August 31st 2009	450 EUR
Students	150 EUR
Retired	200 EUR
A place at the Closing Celebration on the evening of 19 <sup>th</sup> September	25 EUR

The above prices include lunch on each of the conference days.

### **Closing Celebration**

Please indicate on the payment form if you wish to book a place at the Closing Celebration, which will include food, on the evening on Saturday, 19th September.

### **Students**

Please be aware, that if you are a student you are entitled to a reduced registration fee. On receipt of your registration form, you will receive an email from the Finance Office requesting that you provide verification of your student status. Once this has been received, the Finance Office will advise you on how to make your payment.

### **Your Confirmation**

Once your payment has been received by the ING Bank, you will receive an email confirming your booking at the Conference 2009.

### **Cancellations**

Your registration may be cancelled only if notification is received in writing at least four weeks before the commencement of the Conference. A cancellation fee of 75 EUR per delegate will be chargeable.

## **HOW TO PAY**

All fees for registration should be paid in EUR by bank transfer to the account of:

---

### **ECArTE**

**ING Bank Leeuwarden**

**Postbus 382, 8901 MC, Leeuwarden,  
THE NETHERLANDS**

**Account-No.: 65.32.50.800**

**(only for bank transfers from the Netherlands)**

**IBAN: NL64 INGB 0653250800**

**BIC/Swift: INGBNL2A**

---

**N.B. In order for us to assign your payment correctly, please remember to quote your conference registration number and full name as a reference, when making the bank transfer.**

### **Finance Enquiries:**

All enquiries concerning payment should be made by email to the Finance Office:

**registration2009@ecarte.info**

or to

**Treasurer, Egbert Hulshof**

**ECArTE Finance Office**

HAN University of Professional Education

Postbus 6970

6503 GL Nijmegen, THE NETHERLANDS

---

**We look forward to welcoming you  
to our 10<sup>th</sup> Anniversary Conference!**

## **CONFERENCE FORMATS**

The structure of the Conference will provide delegates with the opportunity to select their own programme from a range of different types of sessions and working forms, all of which are designed to bring together artistic and scientific knowledge and experience.

---

### **Paper Sessions:**

Duration: normally paper presentations will be scheduled for 15 minutes, followed by a discussion of 10 minutes.

The presenter is encouraged to prepare a brief written summary for the participants.

---

### **Workshops:**

Duration: 90 minutes. The presenter is asked to lead a practical workshop, which demonstrates new methodological, didactic and/or technical approaches.

(Please note that there may be some variation on the timing of paper presentations and workshops, at the discretion of the Conference Directors. The conference office will keep you informed of any changes which affect your presentation.)

---

### **Poster Presentation Sessions:**

The participants are asked to bring with them poster material, ready for display, to stimulate discussions on arts therapeutic issues. Separate poster sessions will be built into the programme, when the poster presenters will be asked to be available to answer questions and to discuss the content of their posters.

---

### **Discussion Rooms:**

Discussion rooms will be made available for bookings each day, to encourage informal discussions and the sharing of experiences (e.g. curriculum discussion; extension of discussion following a paper or workshop; students' forum; post-performance discussion etc)

---

## **SUBMISSION OF ABSTRACTS**

Deadline for receipt of completed abstracts:

**Monday, 30th March 2009**

If you would like to submit an abstract for consideration, please complete the ABSTRACT FORM on our website **www.ecarte.info** and click on send.

Your abstract will be automatically emailed to the Conference Office:

**conference2009@ecarte.info**

---

## **ABSTRACT LAYOUT FORMAT**

It is important that you adhere to the following guidelines:

- Type-face: Arial, point: 12 (MS Word compatible)
- Abstract max. 300 words in English
- Biographical details max. 100 words in English
- Key words max. 5 words in English
- Title in a) English and b) in your own first language

Please note that Abstracts, which do not follow this format, may not be considered for inclusion in the Conference programme.

### **Example**

**Your name**

**Title of your presentation in English**

**Title of your presentation in your own language**

**Abstract in English** (max. 300 words)

**Key words in English** (max. 5 words)

**Brief biographical notes** (max. 100 words)

e. g. PhD; Registered arts therapist (dramatherapy); Registered supervisor; Programme Leader of MA in Dramatherapy, University of Nottingham; Specialist areas of work and /or main research interests ...

**Postal address, telephone AND email address**

The selection of presenters will be made by the ECARTE Conference Scientific Committee.

All selected presenters will be informed by email through the Conference Office by Friday, 15<sup>th</sup> May.

## THE CENTRAL SCHOOL OF SPEECH & DRAMA, LONDON



*Photograph: Mike Benwell*

The Central School of Speech and Drama combines the traditions of the conservatoire with the cutting edge innovation and enquiry of the best university drama departments.

Central bridges the two sectors. As a small, specialist College of the University of London, it has the largest and most diverse staff who are experts in their field, and the broadest portfolio of drama, theatre and performance-related programmes in Europe.



As the Centre of Excellence in Training for Theatre, Central acts as a hub for the exchange of ideas and best practice in theatre training and research, and as an interface between education and industry. Students here are part of a community, which is passionately engaged in all aspects of performance, drama and theatre. Central School, in association with the Sesame Institute UK and International, runs the Master's course in Drama and Movement Therapy (Sesame).

## TRAVELLING TO THE CENTRAL SCHOOL OF SPEECH AND DRAMA



### HOW TO FIND US

#### Underground

Central School is opposite the Jubilee Line - Swiss Cottage (exit 2), or approximately 8 minutes' walk from the Metropolitan Line Finchley Road tube station.

#### Rail

Central School is approximately 10 minutes' walk from the Silverlink Metro Finchley Road & Frognal rail station.

#### Buses

The following bus routes have stops near Central School: 13, 187, 268, C11, 31, 46, 82, 113.

#### Disabilities

Visitors with disabilities are advised to call prior to visit to ask Central School for help in securing special parking should they require it.

### ACCOMMODATION

Your accommodation during the conference is your own responsibility. You are advised to book your accommodation early.

You may find the following websites useful:

[www.allinlondon.co.uk](http://www.allinlondon.co.uk)

[www.enjoyengland.com](http://www.enjoyengland.com)

[www.hoteldirect.co.uk](http://www.hoteldirect.co.uk)

[www.lastminute.com](http://www.lastminute.com)

[www.lowcostbeds.com/london](http://www.lowcostbeds.com/london)

[www.London30.com](http://www.London30.com)

[www.TravelStay.com](http://www.TravelStay.com)

## REGIONAL REPRESENTATIVES

**Austria:** Ernst J. Wittkowski,  
email: vorstand@oefkg.at

**Belgium:** Jan van Camp  
email: jan.van.camp@uc-kortenbergh.be

**Croatia:** Miroslav Prstacic,  
email: hupo@inet.hr

**Denmark:** Vibeke Skov,  
Tel: 0045-6539 1544, Fax: 0045-6539 1744

**Estonia:** Eha Rüütel,  
email: eha@tlu.ee

**Finland:** Päivi-Maria Hautala,  
email: paivi-maria.hautala@samk.fi

**France:** Anne-Marie Dubois,  
email: AM.DUBOIS@ch-sainte-anne.fr

**Germany:** Albrecht Lampe,  
email: kurator@fh-ottersberg.de

**Greece:** Katerina Robertson,  
email: herma@otenet.gr

**Iceland:** Anna Rögnvaldsdóttir,  
email: annarogn@yahoo.com

**Ireland:** Ed Kuczaj,  
email: Ed.Kuczaj@cit.ie

**Italy:** Mimma Della Cagnoletta,  
email: presidente@arttherapyit.org

**Luxembourg:** Marie-Claude Schmit,  
email: marie-claude.schmit@education.lu

**Netherlands:** Egbert Hulshof,  
email: egbert.hulshof@han.nl

**Norway:** Astri Aakrann-Ziesler,  
email: astraa-z@frisurf.no

**Poland:** Wita Szulc,  
email: wszulc@amu.edu.pl

**Portugal:** Isabel Figueira, Movimento Terapia  
email: dance\_therapy\_portugal@hotmail.com

**Russia:** Alexander Kopytin,  
email: alkop@rol.ru

**Slovenia:** Breda Kroflic,  
email: breda.kroflic@guest.arnes.si

**Spain:** Marian Lopez Fernandez Cao,  
email: mariancao@yahoo.es

**Sweden:** Birgitta Englund,  
email: birgitta.englund@occupther.umu.se

**Switzerland:** Fausto Sergej Sommer,  
email: fssommer@itp.ch

**UK:** Richard Hougham,  
email: r.hougham@cssd.ac.uk

## **GLOBAL PARTNERS**

**Australia:** Joanna Jaaniste,  
email: dramatherapy@ozemail.com.au

**Brazil:** Cristina Dias Alessandrini,  
email: allessandrini@uol.com.br

**Canada:** Suzanne Lister  
email: suzanlis@alcor.concordia.ca

**Israel:** Avi Goren-Bar,  
email: gorenbar@bezeqint.net

**Japan:** Tamae Okada,  
email: t-okada@edu.mie-u.ac.jp

**USA:** Christine Kerr,  
email: CGJKerr@aol.com

## NOTES

---